



ESSENTIAL SHADES™

Ph: 1-800-822-3450 • e-mail: sales@bplampsupply.com
 Fax: 1-800-822-5267 • website: www.bplampsupply.com



BACK IN STOCK! Essential Styles. Great Values

ESSENTIAL SHADES™ are an economical approach to quality lamp shade replacement. All shades are made of tissue shantung with self double fold trim, top & bottom, and are lined in off-white color satin material. Floor lamp models have proper IES bends in the brass plated fitters to maximize versatility.

In addition, these Essential Shades™ are constructed with high quality, rust-preventing steel frames that come with a white-colored powder coat paint beneath the fabric.

FLAT RATE SHIPPING (\$250.00 or more ships for \$25.00) is in effect until further notice

Deluxe Bell - Tissue Shantung



07169E

These Deluxe Bell style Softback Shades are made of Tissue Shantung material with self double fold trim top & bottom and are available in *Off White* and *Eggshell* colors. All shades have 1/2" recessed brass plated fitters and are lined in off white color satin material.

Item Number	Color	Top Dia.	Bottom Dia.	Overall Height	Fitter Style (brass)	Fitter Recess	Each	12 Asst	Foot Note
07165WE	Off White	4	8	6.75	Bulb Clip	1/2"	13.70	12.37	
07167WE	Off White	6.5	12	10	Washer	1/2"	20.95	19.31	
07168WE	Off White	7	14	11	Washer	1/2"	23.88	21.98	
07169WE	Off White	8	16	12	Washer	1/2"	29.66	27.33	
07170WE	Off White	9	18	13	Washer	1/2"	39.77	36.65	(4)(6)
07165E	Eggshell	4	8	6.75	Bulb Clip	1/2"	13.70	12.37	
07167E	Eggshell	6.5	12	10	Washer	1/2"	20.95	19.31	
07168E	Eggshell	7	14	11	Washer	1/2"	23.88	21.98	
07169E	Eggshell	8	16	12	Washer	1/2"	29.66	27.33	
07170E	Eggshell	9	18	13	Washer	1/2"	39.77	36.65	(4)(6)

(4) - Also fits 6" I.E.S. Shades (6) - Floor Shade

Shallow Drum - Tissue Shantung



07160WE

These Shallow Drum style Softback Shades are made of Tissue Shantung material with self double fold trim top & bottom and are available in *Off White* and *Eggshell* colors. All shades have 1/2" recessed brass plated fitters and are lined in off white color satin material.

Item Number	Color	Top Dia.	Bottom Dia.	Overall Height	Fitter Style (brass)	Fitter Recess	Each	12 Asst	Foot Note
07160WE	Off White	8.75	12	7.75	UNO	1/2"	20.50	18.89	(3)(5)
07162WE	Off White	13	19-Jr.	11	Washer	1/2"	41.54	39.08	(2)(6)
07160E	Eggshell	8.75	12	7.75	UNO	1/2"	20.50	18.89	(3)(5)
07162E	Eggshell	13	19-Jr.	11	Washer	1/2"	41.54	39.08	(2)(6)

(2) - Also fits 8" & 10" I.E.S. Shades (5) - Bridge Shade
 (3) - Also fits 6" & 8" I.E.S. Shades (6) - Floor Shade

Basic Empire Tissue Shantung



07282E

These Basic Empire style Softback Shades are made of Tissue Shantung material and are available in *Off White* & *Eggshell* colors. All shades have brass plated fitters and are lined in off white color satin material.

Item Number	Color	Top Dia.	Bottom Dia.	Overall Height	Fitter Style (brass)	Fitter Recess	Each	12 Asst	Foot Note
07282WE	Off White	8	16	11.25	Washer	1/2"	32.07	28.95	(4)
07283WE	Off White	9	18	13	Washer	1/2"	38.20	35.21	(3)
07284WE	Off White	10	20	14	Washer	1/2"	45.19	41.65	(3)
07282E	Eggshell	8	16	11.25	Washer	1/2"	32.07	28.95	(4)
07283E	Eggshell	9	18	13	Washer	1/2"	38.20	35.21	(3)
07284E	Eggshell	10	20	14	Washer	1/2"	45.19	41.65	(3)

(3) - Also fits 6" & 8" I.E.S. Shades (4) - Also fits 6" I.E.S. Shades

July special Values

This sale is subject only to stock on hand. Orders postmarked later than **Aug. 31, 2022** will be invoiced at regular catalog prices. All prices are net. No additional discounts. Min. order \$25.00.

FLAT RATE SHIPPING (\$250.00 or more ships for \$25.00) is in effect until further notice

BACK IN STOCK! Assort (only) Clear Glass Bobeche



Pressed Glass Bobeche,
7/8" center hole dia.
Reg. Ea **6 Asst 24 Ast**

- 21925**- 3 3/8" dia., 4 pins,
7/8" CH. ~~12.37~~ 10.69 9.94
- 21900**- 4" dia., 4 pins,
7/8" CH.. ~~6.99~~ 5.94 5.64
- 21905**- 4" dia., 5 pins,
7/8" CH.. ~~6.15~~ 4.78 4.54
- 21906**- 4" dia., 6 pins,
7/8" CH.. ~~8.28~~ 6.25 6.05
- 21909**- 4" dia., 8 pins,
7/8" CH.. ~~9.03~~ 6.75 6.75
- 21926**- 5" dia., 8 pins,
7/8" CH. ~~13.45~~ 12.55 12.25



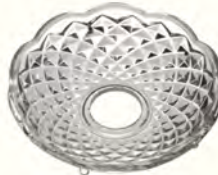
Pressed Glass Bobeche

- 21927** - 6" dia., 10 pins,
7/8" center hole
Reg. Ea..... ~~15.58~~
6 Asst..... 14.60
24 Asst..... 13.95
- 21910** - 8" dia., 12 pins,
12 mm (7/16") center
hole
Reg. Ea..... ~~26.15~~
6 Asst..... 23.15
24 Asst..... 22.95



Pressed Glass Bobeche,
7/8" center hole.

- 21914** - 4" dia., 4 pins
Reg. Ea..... ~~6.75~~
6 Asst..... 4.98
24 Asst..... 4.50
- 21902** - 4" dia., 5 pins
Reg. Ea..... ~~7.75~~
6 Asst..... 6.35
24 Asst..... 5.95



Pressed Glass Bobeche,
7/8" center hole.

- 21928**- 4" dia., 5 pins
Reg. Ea..... ~~8.73~~
6 Asst..... 7.50
24 Asst..... 6.75



Pressed Glass Bobeche,
27mm (1 1/16") center hole.
U11760 - 8" dia., No pins
6 Asst..... 9.75
24 Asst..... 9.55

ASSORT Shade Adapters, Risers, and Metal Finials for Lower Prices!



22114 - Shade Adapter.
Brass finish. Converts washer-type shade to fit on a regular shaped (A-19) bulb. 1/4-27M.
Reg Each.... ~~1.17~~
12 Lot..... .75
100 Asst..... .65



22115 - Shade Adapter. Brass finish. Converts washer-type shade to fit on a torpedo shaped bulb. 1/4-27M.
Reg Each.... ~~1.16~~
12 Lot..... .81
100 Asst..... .76



22110 - Shade Adapter. Fabric shade clip-on adapter for A-19 shape standard bulb, has 1/4-27M thread and includes metal finial. This clip will allow the fabric shade to sit lower on the lamp than other adapters. Brass Plated Finish.
Reg Each.... 1.36
12 Lot..... 1.25
100 Asst..... 1.20

TURNED BRASS RISERS - 1/4-27F X 1/4-27M



Item #	Ht.	Finish	Reg. Each	25 Lot	100 Asst
20966	1/2"	Burn. & Lacq	4.98	.86	.78
20966U	1/2"	Unfinished	.64	.44	.40
20967	1"	Burn. & Lacq	4.40	.83	.75
20967U	1"	Unfinished	.85	.52	.47



20961- 9/16" ht. Metal Finial, Brass plated & lacquered, 1/4-27F
Reg. Ea .33
50 Lot .25
100 Asst.... .20



20961N- 9/16" ht. Metal Finial, Nickel plated finish, 1/4-27F
Reg. Ea .36
50 Lot .25
100 Asst.... .20



20961B- 9/16" ht. Metal Finial, Ant. Bronze finish, 1/4-27F
Reg. Ea ~~.45~~
50 Lot .35
100 Asst.... .30



9/16" ht. Small Brass Finial Knob, 1/4-27F
10958- Burn. & Lacq. Reg. Ea. ~~.45~~
10958U- Unfin. Reg. Ea. ~~.49~~
Your choice of finish
50 Lot..... .38
100 Asst.. .34

Assort Acrylic Finials Only



- 11328**- 1 1/2" ht., 1 1/4" dia., Cylinder, 1/4-27F
Reg... ~~5.53~~
12 Ast.. 4.65
24 Ast.. 3.88
- 11327**- 1 3/4" ht., 1" dia., Cylinder, 1/4-27F
Reg... ~~4.95~~
12 Ast.. 3.79
24 Ast.. 3.16
- 11227**- 2 1/16" ht., 1" dia., Cylinder, 1/4-27F
Reg... ~~4.78~~
12 Ast.. 3.29
24 Ast.. 2.74
- 11224**- 2 1/16" ht., 1" dia., Cuboid, 1/4-27F
Reg... ~~4.87~~
12 Ast.. 3.35
24 Ast.. 2.79



10963N- 1 1/8" ht. Brass Ball Finial, Nickel Plated Finish, 1/4-27F
Reg. Ea ~~1.87~~
12 Lot..... 1.32
100 Asst.. 1.20



10963U- 1 1/8" ht. Brass Ball Finial, Unfin., 1/4-27F
Reg. Ea ~~.89~~
12 Lot..... .71
100 Asst.. .65

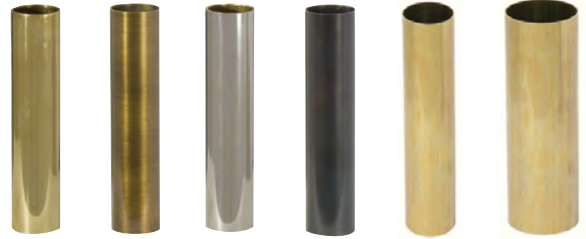


10963A- 1 1/8" ht. Brass Ball Finial w/Antique Brass Finish., 1/4-27F
Reg. Ea ~~2.23~~
12 Lot..... 1.45
100 Asst.. 1.21



10950- 1 1/2" ht. Brass Finial, Unfin., 1/4-27F
Reg. Ea ~~.79~~
12 Lot..... .68
100 Asst.. .59

Modern, Seamless BRASS Candle Covers ASSORT All Candle Covers and Save!



Pol. & Lacq Ant. Brass Nickel Plate Ant. Bronze Unf. Brass Unf. Brass

The smooth clean design and beautiful finishes exhibited by these modern candle covers lend elegance to chandeliers, fixtures, sconces, and lamps. See Hardware Catalog page H-164 for details

WARNING: Risk of electrical shock - you must use an insulated socket with these metal candle sleeves.

Candelabra base candle covers. .82"-.84" inside diameter x .87" outside diameter, .022" thick wall. Your choice of finish and ht.

Item #	Finish	Ht.	Reg.	Each	12 Asst	12 Lot
19909	Pol. & Lacq.	4"	3.40	3.15	2.95	2.75
19909A	Antique Brass	4"	4.40	3.75	3.38	3.04
19909N	Nickel Plated	4"	3.60	3.15	2.95	2.75
19909B	Antique Bronze	4"	3.28	2.95	2.69	2.45
19851BR	Unfin. Brass	3"	2.60	2.35	2.12	1.98
19909U	Unfin. Brass	4"	3.64	3.15	2.95	2.75
19853BR	Unfin. Brass	6"	4.48	4.11	3.85	3.56
19854BR	Unfin. Brass	8"	6.45	5.55	5.15	4.79

Standard base candle covers. 1.21"-1.22" inside diameter x 1.24" outside dia., .026" thick wall. Your choice of height.

Item #	Finish	Ht.	Reg.	Each	12 Asst	12 Lot
19862BR	Unfin. Brass	4"	4.63	4.15	3.85	3.59
19863BR	Unfin. Brass	6"	6.88	6.25	5.81	5.41