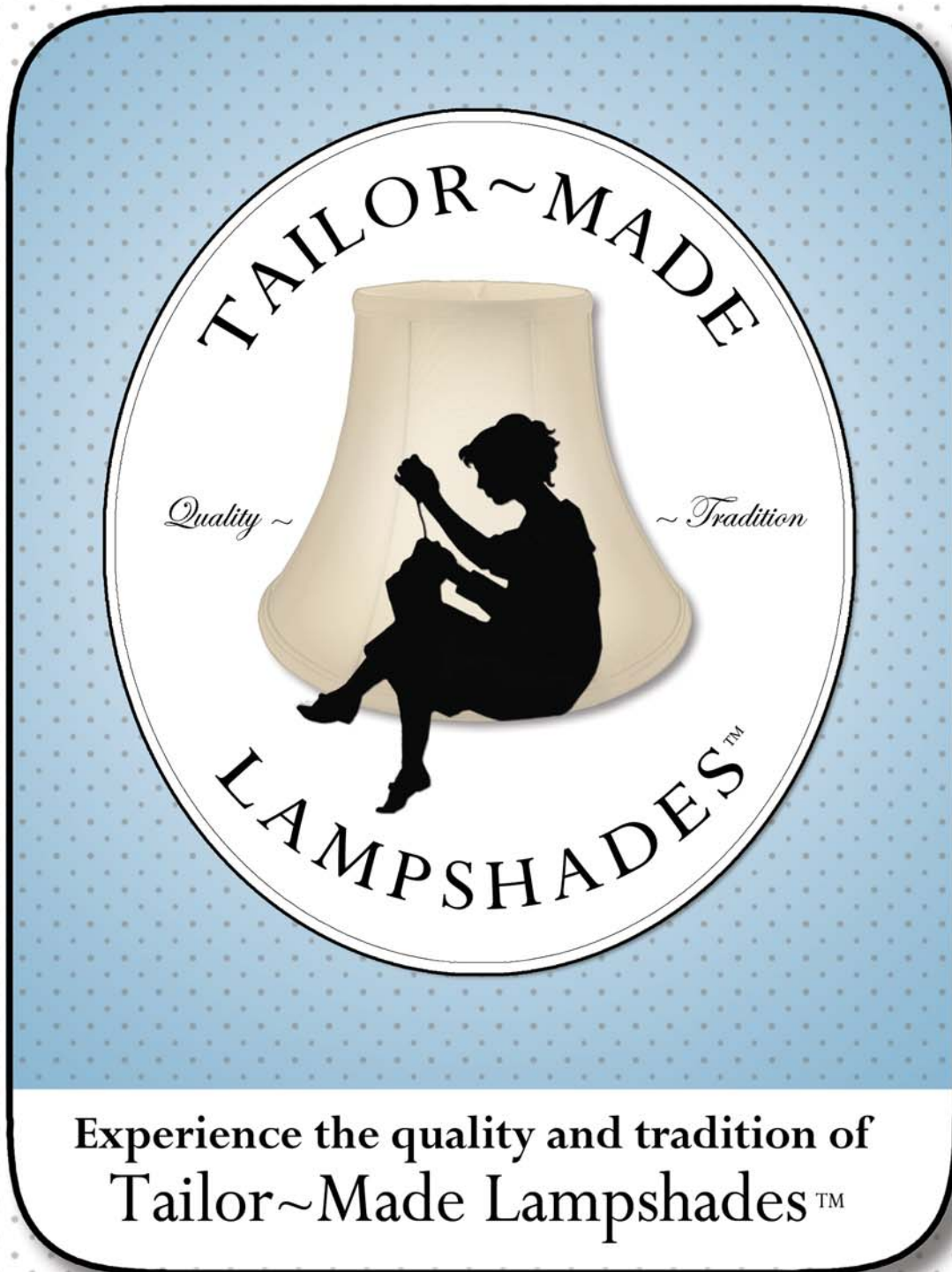


B & P LAMP SUPPLY
2013 FABRIC SHADE SUPPLEMENT



Experience the quality and tradition of
Tailor~Made Lampshades™

B&P
LAMP SUPPLY, INC.

843 Old Morrison Hwy.
McMinnville, TN 37110
931-473-3016
www.bplampsupply.com

With Over 100
NEW STYLES
& FABRICS

General Ordering Information & Policies

INFORMATION FOR ORDERING

- **ALL SALES ARE WHOLESALE ONLY**
- **PRICES ARE SUBJECT TO CHANGE WITHOUT NOTICE. FOR COMPLETE UP-TO-DATE PRICING, PLEASE VISIT: www.bplampsupply.com**
- **FOR COMPLETE ORDERING INFORMATION AND POLICIES, VISIT: www.bplampsupply.com/shipping.php**

BEST VALUE GUARANTEE:

While we often have the lowest price on a product, **our goal is to offer you the best value.** Factors such as product design, weight, material, color, proper fit and pricing all come together for the overall value of the product. Don't be fooled by cheaper prices and cheaper quality. Regardless of where you currently buy, you owe it to yourself to compare the pricing and quality of our lamp parts to the competition. You have our money-back guarantee if not satisfied.

MINIMUM ORDERS:

All minimum orders are \$25.00. All orders under the \$25.00 minimum will be assessed a \$15.00 additional charge to cover the expense of packing and handling.

ASSORTMENTS:

We want to help you save money! Please pay special attention to the assortment information on each price list page. **All numbers enclosed within the same bracket may be assorted for the quantity price reduction.** Numbers from one bracket may not be assorted with numbers from another bracket except where noted.

PRE-PRICING DATA CARDS

Available For Fabric Shades Only - Pre-pricing data cards are available on orders of \$1500.00 and up.

FREIGHT ALLOWANCE POLICY

NEW 5-15 FREIGHT POLICY W/FREE SHIPPING!

Your single shipment with an invoice total of \$500.00 or more entitles you to a 5% freight allowance discount, which will be itemized and deducted from your merchandise total.

Your single shipment with an invoice total of **\$1500.00 or more Will Be Shipped Free!**

Freight allowance and Free Prepaid Shipping applies only to merchandise on hand at the time of shipment and invoices paid within 30 days from the date of the invoice. The 5% freight allowance may not be applied to free freight paid shipments. Special Value Items, Closeout Items, Whale Sale, and Net (distributor) items may not be included in the \$500.00 invoice total for freight allowance or the \$1500.00 pre-paid freight invoice total. B & P Lamp reserves the right to choose the method of shipping on orders that qualify for free pre-paid shipping. Customers will be responsible for any special carrier handling charges which may include inside delivery fees, residential delivery fees, lift gate services, re-delivery fees, etc. C.O.D shipments and large shipments of chimney glass may be disqualified from our free paid freight policy. This freight policy applies only to shipments within the Continental USA.

We ship orders on a first-come, first-served basis and make every effort to ship your order as soon as possible. Most orders are shipped within 2-3 days after their receipt.

FREIGHT RECOMMENDATIONS & CHARGES

All orders are shipped by your preferred method. If no specific is provided we will use the best value shipping option for your order. Most orders will ship via ground service unless we are instructed by you to use expedited services. We charge customers the carrier's published shipping rate for the weight and zone of the order. This amount is not exactly known until the order is packed. We can provide quotes for shipping as needed.

For all large orders of glass lampshades, lamp chimneys, or fabric lampshades we highly recommend Motor Freight (truck) shipping. We carefully prepare all motor freight shipments by first boxing, then "stretch-wrapping" all cartons to a wooden skid. The chances for breakage of glass items is greatly reduced using this method. Also, motor freight will save you on freight charges, in most instances, when shipping a large order of fabric shades.

If you are unsure about the method of shipping you need for your order, please call us with an estimation of your items and quantities and we will gladly advise you on the best shipping options.

When paying by check please add 15% estimated shipping to the merchandise total. Any difference in commercial charges will be credited or charged to your account.

SPECIAL CHARGES:

Due to factors beyond our control, special charges apply to certain shipments and/or items. 1) Because UPS and FedEx Ground honor fewer than 50% of our claims, we must charge a handling fee of \$1.00 per carton for UPS and FedEx Ground shipments and \$1.50 per carton on C.O.D. shipments. 2) Due to the structural sensitivity of 14"-diameter and larger shades, they must be repacked and heavily padded prior to shipment. On orders shipped by UPS or FedEx Ground, we must charge a \$1.00 per carton packing charge on 14"-24"-diameter glass and fabric shades. An additional charge per carton will be included in our shipping charges for packing materials which are not included in the cost of our products.

BACK ORDERS, REORDERS & DISCONTINUED ITEMS:

Any items not shipped with your order will automatically be put on back order (BO) to be shipped as soon as possible (provided the item meets a \$30.00 minimum). If you do not want back orders, notify us and your request will be permanently noted on your file. If your back order is more than 60 days old we will call before shipping. You may cancel your back order at any time prior to shipping. Reordered items (RO) must be ordered again. Discontinued (Disc) items are no longer available.

CREDIT & PAYMENT POLICIES

TERMS:

1% 10 days - net 30 days. There is a 1.5% charge per month on delinquent accounts. Credit will be cancelled on accounts 60 days past due. A check for the full order amount must accompany orders from new accounts until credit is established, unless C.O.D. or a credit card is specified.

CHARGE ACCOUNTS:

We will gladly ship on open-charge account to customers with acceptable credit references. To establish credit, submit two business references and the name of your bank. Please send complete addresses.

CREDIT CARDS:

If you have not established credit with B & P Lamp you may use a MasterCard, VISA or Discover credit card. Carefully include your credit card number, expiration date, the C.I.D. number (last 3 numbers on back of card above your signature), and the cardholder's name and credit card billing address.

C.O.D. ORDERS:

For established accounts there is no deposit for C.O.D. orders. For NEW ACCOUNTS, a deposit of

25% must accompany your C.O.D. order.

RETURNED CHECKS:

Any check returned for non-payment will be subject to a \$30.00 service charge. Once a check has been returned, we may no longer accept checks from that individual or business.

DAMAGE CLAIMS

All shipments are carefully packed by our experienced professional packers in accordance with existing requirements and practices. We are sincerely interested in keeping breakage to a minimum to reduce inconvenience to our customers and to our own administrative staff. **Nevertheless, breakage will occur and we cannot accept responsibility after we have received the carrier's receipt for merchandise received in good order.**

Should damage occur in transit, **DO NOT REFUSE TO ACCEPT THE SHIPMENT** as this will cause unnecessary delays and added expense.

Please file damage claims immediately as they will not be accepted after 15 days.

UPS & FEDEX GROUND CLAIMS:

If merchandise is received damaged, **obtain the delivering carrier's notation of damage** and notify us immediately. We will assist you in every possible way in collecting your claims for loss or damage.

Hold all merchandise and packing material in the original carton for inspection and recall, otherwise your claim cannot be paid.

PARCEL POST CLAIMS:

If merchandise is received damaged, **obtain the delivering carrier's notation of damage** and notify your local postmaster immediately.

MOTOR FREIGHT CLAIMS:

If merchandise is received damaged, **obtain the delivering carrier's notation of damage** and notify your Motor Freight carrier immediately. Hold all merchandise and packing materials in the original carton until your claim is paid.

RETURNED MERCHANDISE

AUTHORIZATION:

Merchandise ordered in error or that is defective may be returned with our authorization. To receive authorization for return, please call 800-822-3450 and have your invoice ready, as well as an itemized list of goods to be returned, and the reason for their return. **No returns will be accepted after 30 days.** Please notify us as soon as possible regarding shortages or an incorrect shipment.

RESTOCKING CHARGES:

We are always anxious to correct mistakes we make without incurring expense to you, however, merchandise ordered in error should be returned freight prepaid and there will be a 20% handling charge. We guarantee every item as to quality and construction. Adjustments to your satisfaction will be made on any item found to be defective. All wired lamps and electrical fixtures are assembled with U.L.-approved material; however, most individual fixtures are not U.L.-approved. Some individual table lamps are U.L.-approved and the approval will be stated in the product's description.

THE B & P GUARANTEE:

We guarantee every item as to quality and construction. Adjustments to your satisfaction will be made on any item found to be defective. All wired lamps and electrical fixtures are assembled with U.L.-approved material; however, most individual fixtures are not U.L.-approved. Some individual table lamps are U.L.-approved and the approval will be stated in the product's description.

B&P

LAMP SUPPLY, INC.

843 Old Morrison Hwy., McMinnville, TN 37110

ph: 931-473-3016 fax: 931-473-3014 email: sales@bplampsupply.com

September 15, 2013

Dear B & P Lamp Supply Customers,

I offer my sincere thanks to those of you who have helped us refine and improve our line of fabric shades since the publication of the *2011 Fabric Shade Catalog*. Your patronage, suggestions, and feedback have inspired this supplement catalog, and help make our business possible.

Please be aware that this is a *supplement* catalog and not a replacement for the 2011 catalog, which is still current. The enclosed *Price List* contains updated pricing for both the *2011 Fabric Shade Catalog* and the *2013 Fabric Shade Supplement* and should remain current well into the year 2014.

The big story behind our new catalog can be summed up in a few words; New Fabrics! New Textures! New Designs! We encourage our dealer customers to display at least a few of these shades on lamps within your stores. When lighted, these shades reveal an extraordinary depth and subtlety of texture that truly completes not only the design of the shade, but the lamp also. Shade #07210V on page S-8 is made with a fabric we call a heavy textured linen that displays this remarkable texture, in this case a wonderful retro-looking cross-hatch design. Our new line of Box Pleated shades prove their versatility on the back page of this catalog, beautifully complimenting the designs of two table lamps and one floor lamp.

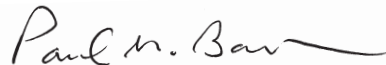
While our looks may have changed, our standards for quality and *value* have not. Our flagship Tailor-Made™ line of softback and hardback lampshades are made with only the finest in materials and workmanship. When compared to shades from any other manufacturer, you and your customers will see the difference in the attention to detail, frame weight, and consistent high quality.

To further improve your profit picture, we recommend buying in quantity assortments. Doing so offers discounted pricing. Also, please keep in mind, most of our shades are in stock for immediate delivery.

Thank you very much for being our customer. We look forward to serving you and welcome all feedback regarding our new catalog and products.

With kind regards,

Paul M. Barnes
President



Index

Miniature Shades	S2-S4
Table/Floor Shades	S5-S17
Harps & Accessories	S18-S19, S22
Lamp Sockets	S20-S21
Light Bulbs (Carbon Filament)	S22
Index by Item Number	S23



Chandelier Hardback Shades

Our Hardback Lampshades are of excellent quality, handmade using the same high standards as our Softback Lampshades from the Taylor~Made™ line. These little shades are so versatile and they work well with traditional, contemporary, & antique lighting.



Mini Retro Drum



00710A

New!



00710E

New!



00710W



00710i

These Chandelier *Mini Retro Drum* style Hardback Shades are made of Microfiber Chiffon or Fine Linen material with rolled edge top & bottom and are available in *Natural, Eggshell, White, Ivory, & Beige* colors. They are lined in white styrene material.



00710B



00710M

Item Number	Material	Color	Top Dia.	Bottom Dia.	Overall Height	Fitter Style
00710A	Linen	Natural	4	4.5	4.5	Torpedo Clip, Brass
00710E	Linen	Eggshell	4	4.5	4.5	Torpedo Clip, Brass
00710W	Microfiber Chiffon	White	4	4.5	4.5	Torpedo Clip, Nickel
00710i	Microfiber Chiffon	Ivory	4	4.5	4.5	Torpedo Clip, Brass
00710B	Microfiber Chiffon	Beige	4	4.5	4.5	Torpedo Clip, Brass
00710M	Fine Linen	Beige	4	4.5	4.5	Torpedo Clip, Brass

All New!



00710D



00710P



00710H



00710T

Burlap Chandelier Shade Mini Retro Drum Hardback

These Chandelier *Mini Retro Drum* style Hardback Shades are made of high quality, tightly woven burlap with rolled edge top & bottom and are available in *Almond, Driftwood, Natural Burlap, & Sand Dollar* colors.

Item Number	Material	Color	Top Dia.	Bottom Dia.	Overall Height	Fitter Style	Lining
00710D	Burlap	Almond	4	4.5	4.5	Torpedo Clip, Brass	White Styrene
00710P	Burlap	Driftwood	4	4.5	4.5	Torpedo Clip, Brass	White Styrene
00710H	Burlap	Natural Burlap	4	4.5	4.5	Torpedo Clip, Nickel	White Styrene
00710T	Burlap	Sand Dollar	4	4.5	4.5	Torpedo Clip, Brass	White Styrene

Chandelier Shade Mini Drum Hardback Shades

Our Hardback Lampshades are of excellent quality, handmade using the same high standards as our Softback Lampshades from the Taylor~Made™ line.



New!



00721A



00721E



00721W



00721F

New!



00721C



00721K



00721N

Chandelier Shade Mini Drum Hardback

These Chandelier *Mini Drum* style Hardback Shades are made of Fine Linen, Microfiber Chiffon, or 100% Pure Silk material with rolled edge top & bottom and are available in *Natural, Eggshell, White, Off-White, Chocolate Brown, & Black* colors.



Mini Drum

Item Number	Material	Color	Top Dia.	Bottom Dia.	Overall Height	Fitter Style	Lining
00721A	Fine Linen	Natural	4.5	4.5	3.5	Torpedo Clip, Brass	White Styrene
00721E	Fine Linen	Eggshell	4.5	4.5	3.5	Torpedo Clip, Brass	White Styrene
00721W	Microfiber Chiffon	White	4.5	4.5	3.5	Torpedo Clip, Nickel	Silver Satin
00721F	Fine Linen	Off White	4.5	4.5	3.5	Torpedo Clip, Brass	White Styrene
00721C	Fine Linen	Chocolate Brown	4.5	4.5	3.5	Torpedo Clip, Brass	White Styrene
00721K	100% Pure Silk	Black	4.5	4.5	3.5	Torpedo Clip, Brass	Gold Foil
00721N	100% Pure Silk	Black	4.5	4.5	3.5	Torpedo Clip, Nickel	Silver Satin

All New!



00721D



00721P



00721H

Burlap Chandelier Shade Mini Drum Hardback

These Chandelier *Mini Drum* style Hardback Shades are made of high quality, tightly woven burlap with rolled edge top & bottom and are available in *Almond, Driftwood, Natural Burlap, & Sand Dollar* colors.



00721T

Item Number	Material	Color	Top Dia.	Bottom Dia.	Overall Height	Fitter Style	Lining
00721D	Burlap	Almond	4.5	4.5	3.5	Torpedo Clip, Brass	White Styrene
00721P	Burlap	Driftwood	4.5	4.5	3.5	Torpedo Clip, Brass	White Styrene
00721H	Burlap	Natural Burlap	4.5	4.5	3.5	Torpedo Clip, Brass	White Styrene
00721T	Burlap	Sand Dollar	4.5	4.5	3.5	Torpedo Clip, Brass	White Styrene



Softback Bell & Mica Chandelier Shades

All New!



00681E



00681H



00681T



00681L

Chandelier Shade Mini Bell - Burlap

These Chandelier *Mini Bell* style Softback Shades are made of high quality, tightly woven Burlap material with self single fold trim top & bottom and are available in the following colors: *Driftwood*, *Natural Burlap*, *Sand Dollar*, & *Almond*. All shades are lined in off white color satin material.



Mini Bell

Item Number	Color	Top Dia.	Bottom Dia.	Overall Height	Fitter Style	Lining
00681E	Driftwood	3	5	4.5	Torpedo Clip, Brass	Off White Satin
00681H	Natural Burlap	3	5	4.5	Torpedo Clip, Brass	Off White Satin
00681T	Sand Dollar	3	5	4.5	Torpedo Clip, Brass	Off White Satin
00681L	Almond	3	5	4.5	Torpedo Clip, Brass	Off White Satin



00750M



00750N

New!



00751N

New!



00751G

Chandelier Shade Mini Hexagon - Mica

These Chandelier *Mini Hexagon* style shades are made of Mica material with a copper foil frame.

Item Number	Color	Top Dia.	Bottom Dia.	Overall Height	Fitter Style	Fitter Recess
00750M	Antique Amber	2.5	4	3.75	Torpedo Clip	Flush
00751M	Antique Amber	3	6	4.25	Torpedo Clip	Flush
00750N	Parchment	2.5	4	3.75	Torpedo Clip	Flush
00751N	Parchment	3	6	4.25	Torpedo Clip	Flush
00751G	Craftsman Green	3	6	4.25	Torpedo Clip	Flush



00751D



00750D



Mini Hexagon

Chandelier Shade Mini Hexagon - Mica

These Chandelier *Mini Hexagon* style shades are made of Mica material with a copper foil frame and have hand decorated panels.

Item Number	Color	Top Dia.	Bottom Dia.	Overall Height	Fitter Style	Fitter Recess
00751D	Antique Amber	3	6	4.25	Torpedo Clip	Flush
00750D	Antique Amber	2.5	4	3.75	Torpedo Clip	Flush

Retro Oval Hardback Shades



All New!



07273A



07274B



07273P

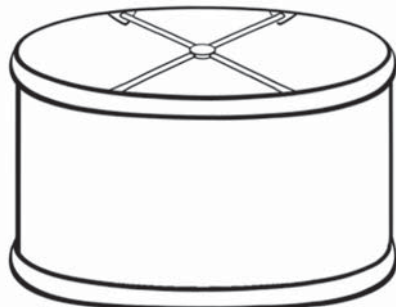


07274T

Retro Oval Hardback

These *Retro Oval* style softback shades are made of high quality linen and burlap material and are available in *Natural, Almond, Driftwood, and Sand Dollar* colors. The oval shaped shade is particularly suited for pairing with vintage desk lamps or oval, rectangle, and octagon shaped lamp bases. And the burlap material lends a nice rustic touch to complete a very interesting table lamp.

Item Number	Material	Color	Top Dia.	Bottom Dia.	Overall Height	Fitter Style	Fitter Recess	Lining
07273A	Linen	Natural	15 X 8	16 X 8.5	8.25	Washer / Brass	1/2"	White Styrene
07274A	Linen	Natural	16.5 X 9	17.5 X 9.5	9	Washer / Brass	1/2"	White Styrene
07273B	Burlap	Almond	15 X 8	16 X 8.5	8.25	Washer / Brass	1/2"	White Styrene
07274B	Burlap	Almond	16.5 X 9	17.5 X 9.5	9	Washer / Brass	1/2"	White Styrene
07273P	Burlap	Driftwood	15 X 8	16 X 8.5	8.25	Washer / Brass	1/2"	White Styrene
07274P	Burlap	Driftwood	16.5 X 9	17.5 X 9.5	9	Washer / Brass	1/2"	White Styrene
07273T	Burlap	Sand Dollar	15 X 8	16 X 8.5	8.25	Washer / Brass	1/2"	White Styrene
07274T	Burlap	Sand Dollar	16.5 X 9	17.5 X 9.5	9	Washer / Brass	1/2"	White Styrene



Oval Retro Hardback





Empire Box Pleat Softback Shades

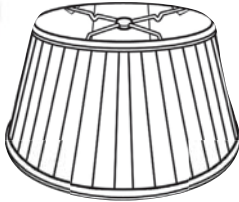
All New!



07294D



07295F



Empire Box Pleat



07296A



07297A

Empire Box Pleat Softback

These *Empire* style softback shades are made of Fine Linen material with self double fold trim top & bottom and are available in *Natural*, *White Ivory*, and *Field Stone* colors. We have opened the tops a bit wider for an English Empire look, which is very versatile and pleasing on either country or more formal lamps. The White Ivory color works well on popular blue and white porcelain lamps.

Item Number	Material	Color	Top Dia.	Bottom Dia.	Overall Height	Fitter Style	Fitter Recess	Foot Note	Lining
07293D	Linen	Field Stone	8	12	7.75	Washer / Antique Brass	1/2"		Off-White Satin
07294D	Linen	Field Stone	9.5	14	10	Washer / Antique Brass	1/2"		Off-White Satin
07295D	Linen	Field Stone	10	16	10	Washer / Antique Brass	1/2"	(3)	Off-White Satin
07296D	Linen	Field Stone	11.5	18	11.5	Washer / Antique Brass	1/2"	(3)	Off-White Satin
07297D	Linen	Field Stone	13	19	11	Washer / Antique Brass	1/2"	(1)	Off-White Satin
07293F	Linen	White Ivory	8	12	7.75	Washer / Brass	1/2"		Off-White Satin
07294F	Linen	White Ivory	9.5	14	10	Washer / Brass	1/2"		Off-White Satin
07295F	Linen	White Ivory	10	16	10	Washer / Brass	1/2"	(3)	Off-White Satin
07296F	Linen	White Ivory	11.5	18	11.5	Washer / Brass	1/2"	(3)	Off-White Satin
07297F	Linen	White Ivory	13	19	11	Washer / Brass	1/2"	(1)	Off-White Satin
07293A	Linen	Natural	8	12	7.75	Washer / Brass	1/2"		Off-White Satin
07294A	Linen	Natural	9.5	14	10	Washer / Brass	1/2"		Off-White Satin
07295A	Linen	Natural	10	16	10	Washer / Brass	1/2"	(3)	Off-White Satin
07296A	Linen	Natural	11.5	18	11.5	Washer / Brass	1/2"	(3)	Off-White Satin
07297A	Linen	Natural	13	19	11	Washer / Brass	1/2"	(1)	Off-White Satin

(1) - Also fits 6", 8", & 10" I.E.S. Shades (3) - Also fits 6" & 8" I.E.S. Shades

Empire Hardback



Our Hardback Lampshades are excellent quality, handmade using the same high standards as our softback Lampshades from the TAILOR~MADE™ line.



New!

06989P



New!

06989T



06989B



07229F



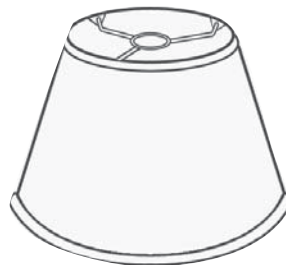
06989L



07229M



07229B



Empire Hardback

Empire Hardback

These Empire style Hardback Shades are made of Fine Linen, Microfiber Chiffon, or Burlap material with self trim top & bottom and are available in *Driftwood, Sand Dollar, Natural Burlap, Off-White, Natural, & Beige* colors. They are lined with white styrene material.

Item Number	Material	Color	Top Dia.	Bottom Dia.	Overall Height	Fitter Style	Fitter Recess	Lining	Foot Note
06989P	Burlap	Driftwood	6	12	7.5	UNO	1 3/4"	White Styrene	(5)
06989T	Burlap	Sand Dollar	6	12	7.5	UNO	1 3/4"	White Styrene	(5)
06989B	Burlap	Natural Burlap	6	12	7.5	UNO	1 3/4"	White Styrene	(5)
07229F	Fine Linen	Off-White	6	12	7.5	UNO	1 3/4"	White Styrene	(5)
06989L	Fine Linen	Natural	6	12	7.5	UNO	1 3/4"	White Styrene	(5)
07229M	Fine Linen	Beige	6	12	7.5	UNO	1 3/4"	White Styrene	(5)
07229B	Microfiber Chiffon	Beige	6	12	7.5	UNO	1 3/4"	White Styrene	(5)

(5) - Bridge Shade



Hardback Lampshades - Linen

Our Hardback Lampshades are excellent quality, handmade using the same high standards as our Softback Lampshades from the TAILOR~MADE™ line. Mid-Century Shallow Drum style shades were often accessorized with white translucent acrylic diffusers top mounted for table and floor shades and both top & bottom mounted for hanging fixtures. Please see page F-58 (2011 Fabric Shade Catalog) for an assortment of white acrylic diffusers.



07210V

New!



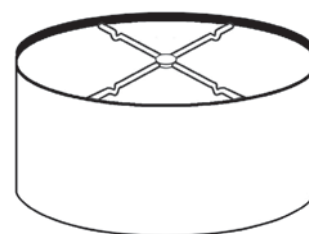
07213F



07208N



07211A



Shallow Drum Hardback

Mid-Century Shallow Drum Hardback Linen - Rolled Edge

These Mid-Century Shallow Drum style Hardback Shades are made of Linen material with rolled edge top & bottom and are available in *Sand, Off-White, Natural, & Black* colors. The Sand, Off-White & Natural colors are lined in white styrene material. The Black color shade is lined with gold foil.

Item Number	Material	Color	Top Dia.	Bottom Dia.	Overall Height	Fitter Style	Fitter Recess	Lining	Foot Note
07208V	Heavy Textured Linen	Sand	10	10	7.5	Washer	1/2"	White Styrene	(3)
07209V	Heavy Textured Linen	Sand	12	12	8	Washer	1/2"	White Styrene	(1)
07210V	Heavy Textured Linen	Sand	14	14	8	Washer	1/2"	White Styrene	(1)
07211V	Heavy Textured Linen	Sand	16	16	8	Washer	1/2"	White Styrene	(1)
07212V	Heavy Textured Linen	Sand	18	18	8.5	Washer	1/2"	White Styrene	(1)
07213V	Heavy Textured Linen	Sand	19	19	9	Washer	1/2"	White Styrene	(1)
07208F	Fine Linen	Off White	10	10	7.5	Washer	1/2"	White Styrene	(3)
07209F	Fine Linen	Off White	12	12	8	Washer	1/2"	White Styrene	(1)
07210F	Fine Linen	Off White	14	14	8	Washer	1/2"	White Styrene	(1)
07211F	Fine Linen	Off White	16	16	8	Washer	1/2"	White Styrene	(1)
07212F	Fine Linen	Off White	18	18	8.5	Washer	1/2"	White Styrene	(1)
07213F	Fine Linen	Off White	19	19	9	Washer	1/2"	White Styrene	(1)
07208N	Fine Linen	Black	10	10	7.5	Washer	1/2"	Gold Foil	(3)
07209N	Fine Linen	Black	12	12	8	Washer	1/2"	Gold Foil	(1)
07210N	Fine Linen	Black	14	14	8	Washer	1/2"	Gold Foil	(1)
07211N	Fine Linen	Black	16	16	8	Washer	1/2"	Gold Foil	(1)
07212N	Fine Linen	Black	18	18	8.5	Washer	1/2"	Gold Foil	(1)
07213N	Fine Linen	Black	19	19	9	Washer	1/2"	Gold Foil	(1)
07208A	Fine Linen	Natural	10	10	7.5	Washer	1/2"	White Styrene	(3)
07209A	Fine Linen	Natural	12	12	8	Washer	1/2"	White Styrene	(1)
07210A	Fine Linen	Natural	14	14	8	Washer	1/2"	White Styrene	(1)
07211A	Fine Linen	Natural	16	16	8	Washer	1/2"	White Styrene	(1)
07212A	Fine Linen	Natural	18	18	8.5	Washer	1/2"	White Styrene	(1)
07213A	Fine Linen	Natural	19	19	9	Washer	1/2"	White Styrene	(1)

(1) - Also fits 6", 8", & 10" I.E.S. Shades

(3) - Also fits 6" & 8" I.E.S. Shades

Retro Rectangle Fine Linen Softback Shades



New!



05680K



05681D



05682M



05683F

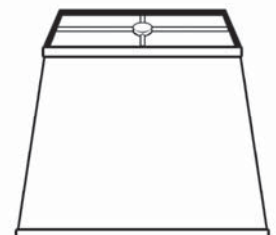


05684A

Item Number	Color	Top Dia.	Bottom Dia.	Overall Height	Fitter Style	Fitter Recess	Lining
05680K	Black	8 x 4	10 x 7	9	Washer / Brass	1/2"	Gold Satin
05681K	Black	10 x 5	12 x 8	9.5	Washer / Brass	1/2"	Gold Satin
05682K	Black	12 x 6	14 x 8	10.25	Washer / Brass	1/2"	Gold Satin
05683K	Black	14 x 7	16 x 9	11	Washer / Brass	1/2"	Gold Satin
05684K	Black	16 x 8	18 x 10	11.75	Washer / Brass	1/2"	Gold Satin
05681D	Field Stone	10 x 5	12 x 8	9.5	Washer / Antique Brass	1/2"	Off White Satin
05682D	Field Stone	12 x 6	14 x 8	10.25	Washer / Antique Brass	1/2"	Off White Satin
05683D	Field Stone	14 x 7	16 x 9	11	Washer / Antique Brass	1/2"	Off White Satin
05684D	Field Stone	16 x 8	18 x 10	11.75	Washer / Antique Brass	1/2"	Off White Satin
05680M	Beige	8 x 4	10 x 7	9	Washer / Brass	1/2"	Off White Satin
05681M	Beige	10 x 5	12 x 8	9.5	Washer / Brass	1/2"	Off White Satin
05682M	Beige	12 x 6	14 x 8	10.25	Washer / Brass	1/2"	Off White Satin
05683M	Beige	14 x 7	16 x 9	11	Washer / Brass	1/2"	Off White Satin
05684M	Beige	16 x 8	18 x 10	11.75	Washer / Brass	1/2"	Off White Satin
05680F	Off-White	8 x 4	10 x 7	9	Washer / Brass	1/2"	Off White Satin
05681F	Off White	10 x 5	12 x 8	9.5	Washer / Brass	1/2"	Off White Satin
05682F	Off White	12 x 6	14 x 8	10.25	Washer / Brass	1/2"	Off White Satin
05683F	Off White	14 x 7	16 x 9	11	Washer / Brass	1/2"	Off White Satin
05684F	Off White	16 x 8	18 x 10	11.75	Washer / Brass	1/2"	Off White Satin
05680A	Natural	8 x 4	10 x 7	9	Washer / Brass	1/2"	Off White Satin
05681A	Natural	10 x 5	12 x 8	9.5	Washer / Brass	1/2"	Off White Satin
05682A	Natural	12 x 6	14 x 8	10.25	Washer / Brass	1/2"	Off White Satin
05683A	Natural	14 x 7	16 x 9	11	Washer / Brass	1/2"	Off White Satin
05684A	Natural	16 x 8	18 x 10	11.75	Washer / Brass	1/2"	Off White Satin

Retro Rectangle - Fine Linen

These *Retro Rectangle* style Softback Shades are made of Fine Linen material with self single fold trim top & bottom and are available in the following colors: *Black, Field Stone, Beige, Off-White, & Natural*. Our Black color shades are lined in gold color satin material. Our Field Stone, Beige, Off-White, Natural, color shades are lined in off white color satin material.



Retro Rectangle



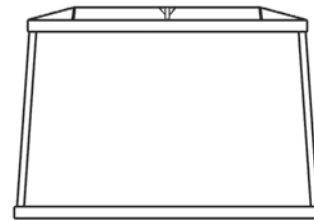
Rectangle Hardback Shades

Our Hardback Lampshades are excellent quality, handmade using the same high standards as our Soft-back Lampshades from the TAILOR~MADE™ line.



Rectangle Hardback - Self Trim Edges

These *Rectangle* style Hardback Shades are made of Burlap, Heavy Textured Linen, or Poly-Blend material with self trim top & bottom and are available in *Almond, Sand, Charcoal Brown, Sand Dollar, Driftwood, and Wheat* colors. They are lined with white styrene material and have 1/2" recessed washer fitters.



Rectangle Hardback

Item Number	Material	Color	Top Dia.	Bottom Dia.	Overall Height	Fitter Style	Fitter Recess
07251B	Burlap	Driftwood	8 X 12	9 X 13	9.5	Washer / Brass	1/2"
07252B	Burlap	Driftwood	9 X 14	10 X 15	10.5	Washer / Brass	1/2"
07253B	Burlap	Driftwood	10 X 16	11 X 17	11	Washer / Brass	1/2"
07251T	Burlap	Sand Dollar	8 X 12	9 X 13	9.5	Washer / Brass	1/2"
07252T	Burlap	Sand Dollar	9 X 14	10 X 15	10.5	Washer / Brass	1/2"
07253T	Burlap	Sand Dollar	10 X 16	11 X 17	11	Washer / Brass	1/2"
07251V	Heavy Textured Linen	Sand	8 X 12	9 X 13	9.5	Washer / Brass	1/2"
07252V	Heavy Textured Linen	Sand	9 X 14	10 X 15	10.5	Washer / Brass	1/2"
07253V	Heavy Textured Linen	Sand	10 X 16	11 X 17	11	Washer / Brass	1/2"
07251N	Burlap	Almond	8 X 12	9 X 13	9.5	Washer / Brass	1/2"
07252N	Burlap	Almond	9 X 14	10 X 15	10.5	Washer / Brass	1/2"
07253N	Burlap	Almond	10 X 16	11 X 17	11	Washer / Brass	1/2"
07251S	Burlap	Charcoal Brown	8 X 12	9 X 13	9.5	Washer / Antique Brass	1/2"
07252S	Burlap	Charcoal Brown	9 X 14	10 X 15	10.5	Washer / Antique Brass	1/2"
07253S	Burlap	Charcoal Brown	10 X 16	11 X 17	11	Washer / Antique Brass	1/2"
07251D	Poly-Blend	Wheat	8 X 12	9 X 13	9.5	Washer / Brass	1/2"
07252D	Poly-Blend	Wheat	9 X 14	10 X 15	10.5	Washer / Brass	1/2"
07253D	Poly-Blend	Wheat	10 X 16	11 X 17	11	Washer / Brass	1/2"

Deep Drum Hardback Lampshades



Our Hardback Lampshades are excellent quality, handmade using the same high standards as our Softback Lampshades from the TAILOR~MADE™ line.

New!



07226C

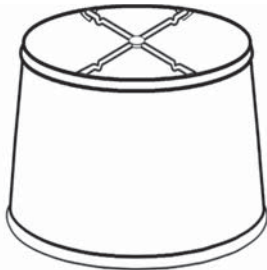
New!



07225S



07227P



Deep Drum Hardback



07225T



07224L

Deep Drum Hardback - Burlap - Self Trim Edges

These *Retro Drum* style Hardback Shades are made of Burlap material with self trim top & bottom and are available in *Almond*, *Charcoal Brown*, *Driftwood*, *Sand Dollar*, and *Dolphin* colors. They are lined in white styrene material.

Item Number	Material	Color	Top Dia.	Bottom Dia.	Overall Height	Fitter Style	Fitter Recess	Foot Note
07224C	Burlap	Almond	10	12	8	Washer / Brass	1/2"	(3)
07225C	Burlap	Almond	12	14	10	Washer / Brass	1/2"	(1)
07226C	Burlap	Almond	14	16	11	Washer / Brass	1/2"	(1)
07227C	Burlap	Almond	16	18	12	Washer / Brass	1/2"	(1)
07224S	Burlap	Charcoal Brown	10	12	8	Washer / Antique Brass	1/2"	(3)
07225S	Burlap	Charcoal Brown	12	14	10	Washer / Antique Brass	1/2"	(1)
07226S	Burlap	Charcoal Brown	14	16	11	Washer / Antique Brass	1/2"	(1)
07227S	Burlap	Charcoal Brown	16	18	12	Washer / Antique Brass	1/2"	(1)
07224P	Burlap	Driftwood	10	12	8	Washer / Brass	1/2"	(3)
07225P	Burlap	Driftwood	12	14	10	Washer / Brass	1/2"	(1)
07226P	Burlap	Driftwood	14	16	11	Washer / Brass	1/2"	(1)
07227P	Burlap	Driftwood	16	18	12	Washer / Brass	1/2"	(1)
07224T	Burlap	Sand Dollar	10	12	8	Washer / Brass	1/2"	(3)
07225T	Burlap	Sand Dollar	12	14	10	Washer / Brass	1/2"	(1)
07226T	Burlap	Sand Dollar	14	16	11	Washer / Brass	1/2"	(1)
07227T	Burlap	Sand Dollar	16	18	12	Washer / Brass	1/2"	(1)
07224L	Burlap	Dolphin	10	12	8	Washer / Brass	1/2"	(3)
07225L	Burlap	Dolphin	12	14	10	Washer / Brass	1/2"	(1)
07226L	Burlap	Dolphin	14	16	11	Washer / Brass	1/2"	(1)
07227L	Burlap	Dolphin	16	18	12	Washer / Brass	1/2"	(1)

(1) - Also fits 6", 8", & 10" I.E.S. Shades

(3) - Also fits 6" & 8" I.E.S. Shades

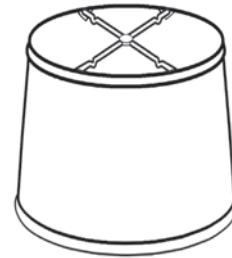


Deep Retro Drum Hardback Lampshades



Deep Retro Drum Hardback Lampshades

With gently tapering sides, our *Deep Retro Drum* hardback shades make a bold statement, and are highly versatile. They are made with the greatest care of Burlap and Fine Linen material with self trim top and bottom, and are available in the following popular colors; *Driftwood*, *Natural*, and *Off-White*.



Deep Retro Drum

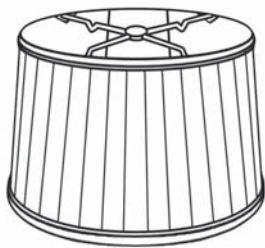
Item Number	Material	Color	Top Dia.	Bottom Dia.	Overall Height	Fitter Style	Fitter Recess	Lining	Foot Note
07233P	Burlap	Driftwood	11	12	10	Washer	1/2"	White Styrene	(3)
07234P	Burlap	Driftwood	13	14	12	Washer	1/2"	White Styrene	(1)
07235P	Burlap	Driftwood	15	16	14	Washer	1/2"	White Styrene	(1)
07236P	Burlap	Driftwood	17	18	14	Washer	1/2"	White Styrene	(1)
07233A	Fine Linen	Natural	11	12	10	Washer	1/2"	White Styrene	(3)
07234A	Fine Linen	Natural	13	14	12	Washer	1/2"	White Styrene	(1)
07235A	Fine Linen	Natural	15	16	14	Washer	1/2"	White Styrene	(1)
07236A	Fine Linen	Natural	17	18	14	Washer	1/2"	White Styrene	(1)
07233F	Fine Linen	Off-White	11	12	10	Washer	1/2"	White Styrene	(3)
07234F	Fine Linen	Off-White	13	14	12	Washer	1/2"	White Styrene	(1)
07235F	Fine Linen	Off-White	15	16	14	Washer	1/2"	White Styrene	(1)
07236F	Fine Linen	Off-White	17	18	14	Washer	1/2"	White Styrene	(1)

(1) - Also fits 6", 8", & 10" I.E.S. Shades (3) - Also fits 6" & 8" I.E.S. Shades

Drum Box Pleat Softback Shades



All New!



Drum Box Pleat

Drum Box Pleat Softback Shades

These *Drum* style Softback Shades are made of Fine Linen material with self double fold trim top & bottom and are available in *Natural*, *White Ivory*, and *Field Stone* colors. The versatile styling of these pleated drum shades looks great on either country or more formal table and floor lamps. The *White Ivory* color fabric works well on popular blue and white color porcelain lamps.

Item Number	Material	Color	Top Dia.	Bottom Dia.	Overall Height	Fitter Style	Fitter Recess	Foot Note	Lining
07200A	Linen	Natural	10	12	8	Washer / Brass	1/2"	(3)	Off-White Satin
07201A	Linen	Natural	12	14	10	Washer / Brass	1/2"	(1)	Off-White Satin
07202A	Linen	Natural	14	16	11	Washer / Brass	1/2"	(1)	Off-White Satin
07203A	Linen	Natural	16	18	12	Washer / Brass	1/2"	(1)	Off-White Satin
07200F	Linen	White Ivory	10	12	8	Washer / Brass	1/2"	(3)	Off-White Satin
07201F	Linen	White Ivory	12	14	10	Washer / Brass	1/2"	(1)	Off-White Satin
07202F	Linen	White Ivory	14	16	11	Washer / Brass	1/2"	(1)	Off-White Satin
07203F	Linen	White Ivory	16	18	12	Washer / Brass	1/2"	(1)	Off-White Satin
07200G	Linen	Field Stone	10	12	8	Washer / Antique Brass	1/2"	(3)	Off-White Satin
07201G	Linen	Field Stone	12	14	10	Washer / Antique Brass	1/2"	(1)	Off-White Satin
07202G	Linen	Field Stone	14	16	11	Washer / Antique Brass	1/2"	(1)	Off-White Satin
07203G	Linen	Field Stone	16	18	12	Washer / Antique Brass	1/2"	(1)	Off-White Satin

(1) - Also fits 6", 8", & 10" I.E.S. Shades

(3) - Also fits 6" & 8" I.E.S. Shades



Shallow Drum - Burlap Softback Shades

Handmade using the same high standards as all of our Softback Lampshades from the TAILOR~MADE™ line.

All New!



07162S



07162V



07162R



Shallow Drum

Shallow Drum - Burlap

These *Shallow Drum* style Softback Shades are made of high quality, tightly woven burlap material with single fold trim top & bottom and are available in the following colors: *Driftwood, Almond, & Sand Dollar*. All shades are lined in off white color satin material.

Item Number	Material	Color	Top Dia.	Bottom Dia.	Overall Height	Fitter Style	Fitter Recess	Foot Note	Lining
07160S	Burlap	Driftwood	8.75	12	7.75	UNO / Brass	1/2"	(3) (5)	Off-White Satin
07161S	Burlap	Driftwood	10	15	8.5	Washer / Brass	1/2"	(1)	Off-White Satin
06946S	Burlap	Driftwood	12	18	11	Washer / Brass	1/2"	(1)	Off-White Satin
07162S	Burlap	Driftwood	13	19 - Jr.	11	Washer / Brass	1/2"	(1)	Off-White Satin
07160V	Burlap	Almond	8.75	12	7.75	UNO / Brass	1/2"	(3) (5)	Off-White Satin
07161V	Burlap	Almond	10	15	8.5	Washer / Brass	1/2"	(1)	Off-White Satin
06946V	Burlap	Almond	12	18	11	Washer / Brass	1/2"	(1)	Off-White Satin
07162V	Burlap	Almond	13	19 - Jr.	11	Washer / Brass	1/2"	(1)	Off-White Satin
07162R	Burlap	Sand Dollar	13	19 - Jr.	11	Washer / Antique Brass	1/2"	(1)	Off-White Satin

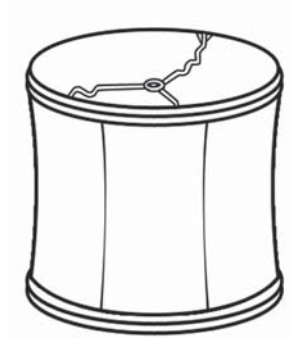
(1) - Also fits 6", 8", & 10" I.E.S. Shades (3) - Also fits 6" & 8" I.E.S. Shades (5) - Bridge Shade

Deep Drum No-Hug Softback Shades

Handmade using the same high standards as all our Lampshades from the TAILOR~MADE™ line.



All New!



Deep Drum No Hug



06896F



06897A

Item Number	Material	Color	Top Dia.	Bottom Dia.	Overall Height	Fitter Recess	Foot Note
06896F	Linen	Off-White	11	12	12	1/2"	(3)
06897F	Linen	Off-White	13	14	14	2"	(1)
06898F	Linen	Off-White	15	16	16	3"	(1)
06896A	Linen	Natural	11	12	12	1/2"	(3)
06897A	Linen	Natural	13	14	14	2"	(1)
06898A	Linen	Natural	15	16	16	3"	(1)

(1) - Also fits 6", 8", & 10" I.E.S. Shades (3) - Also fits 6" & 8" I.E.S. Shades

Deep Drum No-Hug Linen

These Deep Drum No-Hug style Softback Shades are made of Fine Linen material with self double fold trim top & bottom and are available in *Off-White* & *Natural* colors. They are lined in off white color satin material & all have brass plated washer fitters.



06898W



06896

Deep Drum No-Hug Tissue Shantung

These Deep Drum No-Hug style Softback Shades are made of Tissue Shantung material with self double fold trim top & bottom and are available in *Off White* & *Eggshell* colors. They are lined in off white color satin material.

Item Number	Color	Top Dia.	Bottom Dia.	Overall Height	Fitter Style	Fitter Recess	Foot Note	Lining
06895W	Off White	9	10	10	Washer / Brass	1/2"	(4)	Off-White Satin
06896W	Off White	11	12	12	Washer / Brass	1/2"	(3)	Off-White Satin
06897W	Off White	13	14	14	Washer / Brass	2"	(1)	Off-White Satin
06898W	Off White	15	16	16	Washer / Brass	3"	(1)	Off-White Satin
06899W	Off White	17	18	18	Washer / Brass	4"	(1)	Off-White Satin
06895	Eggshell	9	10	10	Washer / Brass	1/2"	(4)	Off-White Satin
06896	Eggshell	11	12	12	Washer / Brass	1/2"	(3)	Off-White Satin
06897	Eggshell	13	14	14	Washer / Brass	2"	(1)	Off-White Satin
06898	Eggshell	15	16	16	Washer / Brass	3"	(1)	Off-White Satin
06899	Eggshell	17	18	18	Washer / Brass	4"	(1)	Off-White Satin

(1) - Also fits 6", 8", & 10" I.E.S. Shades (3) - Also fits 6" & 8" I.E.S. Shades (4) - Also fits 6" I.E.S. Shades

Floor Lamp Shades

These *Empire* style shades are made of Mica material with a copper foil frame trimmed in faux leather.



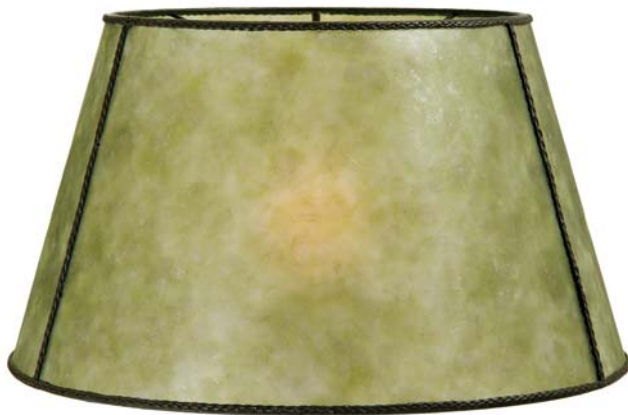
New!

05719N



New!

05719S



05719G

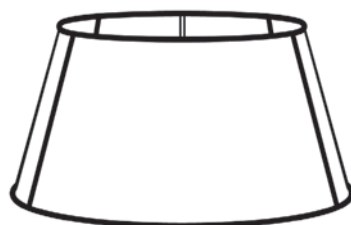


05719M

Floor Lamp Empire - Mica

Item Number	Color	Top Dia.	Bottom Dia.	Overall Height	Fitter Style	Fitter Recess	Foot Note
05719N	Parchment	13	19-Jr.	11	Washer / Antique Brass	1/2"	(1)(6)
05719S	Onyx	13	19-Jr.	11	Washer / Antique Brass	1/2"	(1)(6)
05719G	Craftsman Green	13	19-Jr.	11	Washer / Antique Brass	1/2"	(1)(6)
05719M	Antique Amber	13	19-Jr.	11	Washer / Antique Brass	1/2"	(1)(6)

(1) - Also fits 6", 8", & 10" I.E.S. Shades (6) - Floor Shade



Empire Mica

Hexagon Mica Shades



05702N



05702S - UNO Fitter
05703S - Washer Fitter



05702G



05700M



05704M



05705M



Hexagon Mica

Hexagon - Mica

These *Hexagon* style shades are made of Mica material with a copper foil frame.

Item Number	Color	Top Dia.	Bottom Dia.	Overall Height	Fitter Style	Fitter Recess	Decoration	Foot Note
05702N	Parchment	7	12	7.5	UNO	1"	Plain	(5)
05702S	Onyx	7	12	7.5	UNO	1"	Plain	(5)
05703S	Onyx	7	12	7.5	Washer	1/2"	Plain	
05702G	Craftsman Green	7	12	7.5	UNO	1"	Plain	(5)
05700M	Antique Amber	5	8	6	Bulb Clip	1/2"	Plain	
05702M	Antique Amber	7	12	7.5	UNO	1"	Plain	(5)
05703M	Antique Amber	7	12	7.5	Washer	1/2"	Plain	
05704M	Antique Amber	9	14	10	Washer	1/2"	Plain	
05705M	Antique Amber	10	16	11	Washer	1/2"	Plain	

(5) - Bridge Shade

Lamp Harps

High Quality Harps with Protective Coating, 1/4-27M threads at top & with base to slip 1/8 IP.

Brass Plated Harps w/Harp Bases



Brass Plated
Finish
w/swivel top

Regular Weight

12780-	6"	12740-	7"
12754-	7"	12741-	7 1/2"
12755-	7 1/2"	12742-	8"
12756-	8"	12743-	8 1/2"
12757-	8 1/2"	12744-	9"
12758-	9"	12745-	9 1/2"
12759-	9 1/2"	12746-	10"
12760-	10"	12747-	10 1/2"
12761-	10 1/2"	12748-	11"
12762-	11"	12749-	11 1/2"
12763-	11 1/2"	12750-	12"
12764-	12"	12751-	13"
12765-	13"	12752-	14"
12766-	14"	12753-	15"
12767-	15"		

Antique Bronze Finish Harps w/Harp Bases



New!
Antique Bronze
Finish
w/swivel top

Heavy Duty

12780B-	6"
12754B-	7"
12756B-	8"
12758B-	9"
12760B-	10"
12762B-	11"
12764B-	12"

Nickel Plated Harps w/Harp Bases



Nickel Plated
Finish
w/swivel top

Regular Weight

12780N-	6"
12754N-	7"
12756N-	8"
12758N-	9"
12760N-	10"
12762N-	11"
12764N-	12"

Antique Brass Finish Harps w/Harp Bases



Antique Brass
Finish
w/swivel top

Heavy Duty

12780A-	6"
12754A-	7"
12756A-	8"
12758A-	9"
12760A-	10"
12762A-	11"
12764A-	12"

For Lamp Sockets with Matching Finishes, see pages S-20 & S-21

1/4-27 Brass Finials to Match Harp Finishes



10958 - Small turned brass finial with burnished & lacq. finish to match brass plated harps. 1/4-27F



10958B - Small turned brass finial with Antique Bronze finish to match antique bronze harps. 1/4-27F



10958N - Small turned brass finial with Nickel Plated finish to match nickel plated harps. 1/4-27F



10958A - Small turned brass finial with Antique Brass finish to match antique brass harps. 1/4-27F



Brass Plated
Finish
w/swivel top

MINIATURE SIZE, Brass Plated Regular Weight Harps

12730-	4"
12731-	4 1/2"
12732-	5"
12733-	5 1/2"

Cup Harp, Harp Bases, Reflector Lamp Parts

• Harp Bases For Regular-sized Incandescent Bulbs



Brass Plated Harp Bases
- Slips 1/8 IP Pipe

I2735- Heavy Duty
I2736- Regular Wt.

New!



Brass Plated Harp Bases
- Slips 1/4 IP Pipe

I2770- Heavy Duty
I2771- Regular Wt.

• Harp Bases For CFL or Over-sized Bulbs

New!



Brass Plated

Wide Harp Bases
- Brass Plated Harp Bases -
Slips 1/8 IP Pipe

I2769- Heavy Duty
I2768- Regular Wt.

New!



Nickel Plated

Wide Harp Bases
- Nickel Plated Harp Bases -
Slips 1/8 IP Pipe

I2769N- Heavy Duty
I2768N- Regular Wt.

• Harp Base For Phenolic Sockets

New!



I2774 - Steel, Brass Plated Harp Base For Standard Phenolic Sockets - fits heavy duty harps. (Socket Not Included)

New!
Swing Arm Cup



I2772 - Brass Plated Swing Arm Cup, 2½" tall with side outlet, and 1/8 IP slip hole in base. For use with Swing Arm lamps and shades - Fits our #12790 & #12791 harps (see right).

Swing Arm Cup Harp

I2790- 8" (6" actual size)
I2791- 9" (7" actual size)

Cup Harp - Brass Plated. Size listed above is overall length when cup harp is mounted into #12772 Swing Arm Cup.

New!



Reflector Type Shade Risers - Raw steel risers are intended to nest upon the top of our I.E.S opal glass reflectors (see below) to facilitate the mounting of fabric shades above reflector type floor lamps, and allows the use of risers to attain a proper height. (suitable for painting).

I2775 - 6" diameter - fits our #08390
I2776 - 8" diameter - fits our #08391
I2777 - 10" diameter - fits our #08392

Best Quality TRANSLUCENT Opal Glass I.E.S. Reflector Shades

These I.E.S. Shades have a nice translucent quality that is superior to some of the dark, opaque I.E.S. shades on the market now. They will make your floor lamp more efficient and look brighter and better.



08390 - Waffle Pattern with 2¼" fitter, 6" dia.



08391- Waffle Pattern with 2¼" fitter, 8" dia.



08392 - Waffle pattern w/ 2⅞" fitter, 10" dia.

Solid Brass, Early Electric/Industrial Style Lamp Sockets

These high quality, U.L. listed lamp holders are specially designed for use in the restoration of antique lamps and fixtures. They also serve handsomely in the production of authentically styled reproduction antique lighting. Available here in a beautiful Nickel Plated, Polished and Lacquered brass finish, Antique Brass finish, and **NEW Antique Bronze finish**. Each of these sockets come with an early-style slotted setscrew instead of a modern-looking phillips setscrew. Your choice of Socket Style & Finish.



All Sockets are Standard (Edison) Size - 250W-250V, U.L. Listed

Nickel Plated			
Item Number	Switch Style	Interior Socket	UNO Thread
48001N	Keyless	On / Off	Yes
48011N	Pull Chain	On / Off	Yes
48021N	Turn Knob	On / Off	Yes
48031N	Turn Knob	3-Way	Yes
48041N	Push-Thru	On / Off	Yes

Antique Brass Finish			
Item Number	Switch Style	Interior Socket	UNO Thread
48001A	Keyless	On / Off	Yes
48011A	Pull Chain	On / Off	Yes
48021A	Turn Knob	On / Off	Yes
48022A	Flat Key	3-Way	Yes
48031A	Turn Knob	3-Way	Yes
48041A	Push-Thru	On / Off	Yes

Polished & Lacquered Finish			
Item Number	Switch Style	Interior Socket	UNO Thread
48000	Keyless	On / Off	No
48001	Keyless	On / Off	Yes
48020	Turn Knob	On / Off	No
48021	Turn Knob	On / Off	Yes
48022	Flat Key	On / Off	Yes
48023	Flat Key	3-Way	Yes
48030	Turn Knob	3-Way	No
48031	Turn Knob	3-Way	Yes
48040	Push-Thru	On / Off	No
48041	Push-Thru	On / Off	Yes
48051	Turn Knob	3-Terminal	Yes

New!

Antique Bronze Finish			
Item Number	Switch Style	Interior Socket	UNO Thread
48001B	Keyless	On / Off	Yes
48011B	Pull Chain	On / Off	Yes
48021B	Turn Knob	On / Off	Yes
48022B	Flat Key	3-Way	Yes
48031B	Turn Knob	3-Way	Yes
48041B	Push-Thru	On / Off	Yes

For Lamp Harps & Finials with Finishes Matched to These Sockets See Page S-18



All New! - Solid Brass, Premium Lamp Sockets

These high quality, U.L. listed lamp holders are specially designed for use in the manufacture and restoration of fine table lighting. Each style comes with a solid brass, knurled turn knob with a matching finish. Available here in a beautiful *Nickel Plated, Polished and Lacquered* brass finish, *Antique Brass* finish, and NEW *Antique Bronze* finish. Each of these sockets come with an early-style slotted setscrew instead of a modern-looking phillips setscrew. Your choice of Socket Style & Finish.

All Sockets Have Solid Brass Turn-Knobs With Matching Finish



48141N- Nickel Plated
Brass Knob



48141- Polished & Lacq.
Brass Knob



48141A- Antique Brass
Brass Knob



48141B - Antique Bronze
Brass Knob

All Sockets are Standard (Edison) Size - 250W-250V, U.L. Listed

Nickel Plated			
Item Number	Switch Style	Interior Socket	UNO Thread
48121N	Brass Knob	On / Off	Yes
48141N	Brass Knob	3-Way	Yes

Antique Brass Finish			
Item Number	Switch Style	Interior Socket	UNO Thread
48121A	Brass Knob	On / Off	Yes
48141A	Brass Knob	3-Way	Yes

Polished & Lacquered Finish			
Item Number	Switch Style	Interior Socket	UNO Thread
48120	Brass Knob	On / Off	No
48121	Brass Knob	On / Off	Yes
48140	Brass Knob	3-Way	No
48141	Brass Knob	3-Way	Yes
48151	Brass Knob	3-Terminal	Yes

Antique Bronze Finish			
Item Number	Switch Style	Interior Socket	UNO Thread
48121B	Brass Knob	On / Off	Yes
48141B	Brass Knob	3-Way	Yes

For Lamp Harps & Finials with Finishes Matched to These Sockets See Page S-18



Nickel Plated Finish



Brass Plated Finish



Antique Brass Finish



Antique Bronze Finish

Antique Style Carbon Filament Light Bulbs (dimensions are approximate)

Check Our **NEW LOWER** Prices on Antique Style Bulbs!



Edison Base Light Bulb with "Squirrel Cage" style filament. 5 1/2" ht.

47089 - 30W/130V
47105 - 40W/130V
47094 - 60W/130V

47107 - 20W/120V Edison Base T9 Bulb with "Hairpin" style filament. 5 1/2" ht.

Edison Base Vintage Style Light Bulb with "Quad Loop" style filament. 4 1/4" ht.

47109 - 40W/120V
47110 - 60W/120V

47114 - 60W/120V Edison Base Vintage Style Bulb with "Squirrel Cage" style filament. 4 1/4" ht.

47108 - 40W/120V Edison Base Vintage Style Bulb with "Spiral" style filament. 4 1/4" ht.



47112 - 25W/120V Candelabra Base Vintage Style Torpedo Bulb with "Diamond" style filament. 3 3/4" ht.

47113 - 60W/120V Edison Base Vintage Style Bulb with "Squirrel Cage" style filament. 5" ht.

Edison Base Vintage Style Light Bulb with "Hairpin" style filament. 4 3/4" ht.

47088 - 40W/120V
47111 - 60W/120V

47115 - 60W/120V Edison Base Vintage Style Bulb with "Squirrel Cage" style filament. 5" ht., 3 5/8" diameter

New!

IF SHADE WRAP IS REMOVED, ITEM IS NON-REFUNDABLE

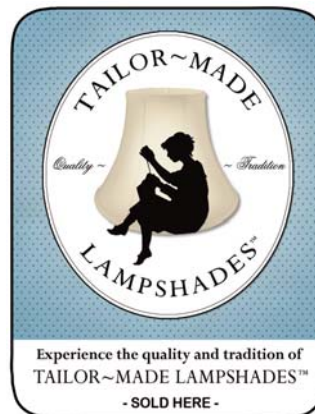
99279 - FABRIC SHADE WRAP SAVER This removable label is very useful for dealers who accept returns on fabric shades. Printed tastefully on metallic copper-color foil-topped paper stock, this label serves as a helpful reminder to customers to return loaned or purchased lampshades in the original factory wrap. 1 1/2" dia. Sold per 1,000 piece roll.



99056- Dry Shade Cleaner New! RUBGUM brand dry cleaning "puff" is excellent for silk, rayon, cotton, parchment, suede, etc. and is harmless to colors, material, & hands.

99278 - TAILOR~MADE LAMP-SHADES™ Logo Label for shop door or window. Proudly display the TAILOR~MADE™ logo to let your customers know that you sell only the finest quality in lampshades! Double-sided label may be viewed from both sides if applied to window or door glass. Available at no charge (limit of 2 please) with your TAILOR~MADE™ fabric shade order. 3 3/4" X 4 3/4".

New!



INDEX (BY ITEM NUMBER)

Item No.	Page No.	Item No.	Page No.	Item No.	Page No.	Item No.	Page No.	Item No.	Page No.
00681E	4	06895	15	07224T	11	07297A	6	12774	19
00681H	4	06895W	15	07225C	11	07297D	6	12775	19
00681L	4	06896	15	07225L	11	07297F	6	12776	19
00681T	4	06896A	15	07225P	11	08390	19	12777	19
00710A	2	06896F	15	07225S	11	08391	19	12780	18
00710B	2	06896W	15	07225T	11	08392	19	12780A	18
00710D	2	06897	15	07226C	11	10958	18	12780B	18
00710E	2	06897A	15	07226L	11	10958A	18	12780N	18
00710H	2	06897W	15	07226P	11	10958B	18	12790	19
00710i	2	06897F	15	07226S	11	10958N	18	12791	19
00710M	2	06898	15	07226T	11	12730	18	47088	22
00710P	2	06898A	15	07227C	11	12731	18	47089	22
00710T	2	06898F	15	07227L	11	12732	18	47094	22
00710W	2	06898W	15	07227P	11	12733	18	47105	22
00721A	3	06899	15	07227S	11	12735	19	47107	22
00721C	3	06899W	15	07227T	11	12736	19	47108	22
00721D	3	06946S	14	07229B	7	12740	18	47109	22
00721E	3	06946V	14	07229F	7	12741	18	47110	22
00721F	3	06989B	7	07229M	7	12742	18	47111	22
00721H	3	06989L	7	07233A	12	12743	18	47112	22
00721K	3	06989P	7	07233F	12	12744	18	47113	22
00721N	3	06989T	7	07233P	12	12745	18	47114	22
00721P	3	07160S	14	07234A	12	12746	18	47115	22
00721T	3	07160V	14	07234F	12	12747	18	48000	20
00721W	3	07161S	14	07234P	12	12748	18	48001	20
00750D	4	07161V	14	07235A	12	12749	18	48001A	20
00750M	4	07162R	14	07235F	12	12750	18	48001B	20
00750N	4	07162S	14	07235P	12	12751	18	48001N	20
00751D	4	07162V	14	07236A	12	12752	18	48011A	20
00751G	4	07200A	13	07236F	12	12753	18	48011B	20
00751M	4	07200F	13	07236P	12	12754	18	48011N	20
00751N	4	07200G	13	07251B	10	12754A	18	48020	20
05680A	9	07201A	13	07251D	10	12754B	18	48021	20
05680F	9	07201F	13	07251N	10	12754N	18	48021A	20
05680K	9	07201G	13	07251S	10	12755	18	48021B	20
05680M	9	07202A	13	07251T	10	12756	18	48021N	20
05681A	9	07202F	13	07251V	10	12756A	18	48022	20
05681D	9	07202G	13	07252B	10	12756B	18	48022A	20
05681F	9	07203A	13	07252D	10	12756N	18	48022B	20
05681K	9	07203F	13	07252N	10	12757	18	48023	20
05681M	9	07203G	13	07252S	10	12758	18	48030	20
05682A	9	07208A	8	07252T	10	12758A	18	48031	20
05682D	9	07208F	8	07252V	10	12758B	18	48031A	20
05682F	9	07208N	8	07253B	10	12758N	18	48031B	20
05682K	9	07208V	8	07253D	10	12759	18	48031N	20
05682M	9	07209A	8	07253N	10	12760	18	48040	20
05683A	9	07209F	8	07253S	10	12760A	18	48041	20
05683D	9	07209N	8	07253T	10	12760B	18	48041A	20
05683F	9	07209V	8	07253V	10	12760N	18	48041B	20
05683K	9	07210A	8	07273A	5	12761	18	48041N	20
05683M	9	07210F	8	07273B	5	12762	18	48051	20
05684A	9	07210N	8	07273P	5	12762A	18	48120	21
05684D	9	07210V	8	07273T	5	12762B	18	48121	21
05684F	9	07211A	8	07274A	5	12762N	18	48121A	21
05684K	9	07211F	8	07274B	5	12763	18	48121B	21
05684M	9	07211N	8	07274P	5	12764	18	48121N	21
05700M	17	07211V	8	07274T	5	12764A	18	48140	21
05702G	17	07212A	8	07293A	6	12764B	18	48141	21
05702M	17	07212F	8	07293D	6	12764N	18	48141A	21
05702N	17	07212N	8	07293F	6	12765	18	48141B	21
05702S	17	07212V	8	07294A	6	12766	18	48141N	21
05703M	17	07213A	8	07294D	6	12767	18	48151	21
05703S	17	07213F	8	07294F	6	12768	19	99056	22
05704M	17	07213N	8	07295A	6	12768N	19	99278	22
05705M	17	07213V	8	07295D	6	12769	19	99279	22
05719G	16	07224C	11	07295F	6	12769N	19		
05719M	16	07224L	11	07296A	6	12770	19		
05719N	16	07224P	11	07296D	6	12771	19		
05719S	16	07224S	11	07296F	6	12772	19		

3 Simple Steps for Selecting the Correct Shape and Size of Fabric Shade for Your Lamp

Step 1: Selecting the shape of the shade

Fabric shades come in many different shapes. When choosing the shape, the lamp shade should be similar to the shape of the lamp base. Also consider the location of the lamp as certain shapes allow the lamp to set closer to the wall or other furniture.

Common Fabric Shade and Lamp Base Shapes:

- Round
- Bell
- Cylinder
- Square
- Oval
- Rectangular
- Hexagon

A lamp base with an Asian motif looks good when paired with a Pagoda style shade.

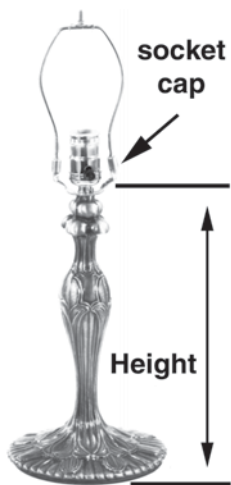


Fig. 1

Step 2: Selecting the shade's bottom diameter

The best way to determine the bottom diameter of the shade for your table lamp is to measure the lamp height from the bottom edge of the table lamp base to the top of the lamp stem, (just below the socket cap) (see Fig. 1).

The shade you choose for your lamp should have a bottom diameter that is within 2", plus or minus, the measured height of your lamp. For example if your lamp height (measured by the method noted above) is 14" tall, the shade you select (depending on your preference for a small, medium, or larger looking shade) should have a bottom diameter of 12", 13", 14", 15" or 16". Our fabric shade descriptions will describe the Bottom diameter of each shade. (see Fig. 2).



Fig. 2

Step 3: Selecting the shade's overall height

The overall height of the shade is directly related to the height of the harp. As a general rule, the overall height of the shade should not exceed the height of the harp plus 1/2", and should not be smaller than the height of the harp minus 1/2". If, for example, your harp is 7" tall, the shade you select should have an overall height in the range of 7 1/2" to 6 1/2". Our fabric shade descriptions will provide the overall height of each shade.

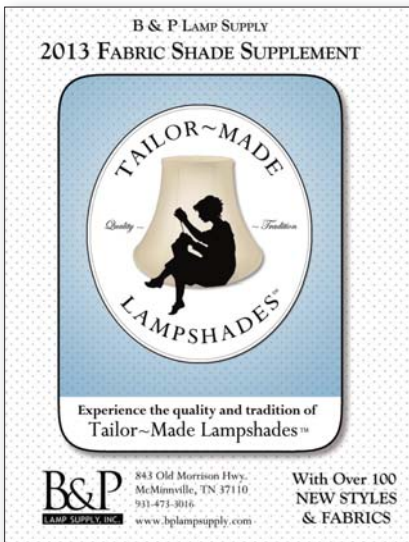
The shade height is important because you want adequate coverage of the bulb without covering the lamp base.

Note: Fringe and tassel should not be included in the measurement of the overall height of the shade.

Once you have selected the shade's shape, bottom diameter and overall height, which would be appropriate for your lamp, you can match the shade's shape and dimensions to our extensive selection of fabric lamp shades.

B & P Lamp Supply's Specialty and Parts Catalogs

(we also offer these fine product catalogs for expert repair, restoration, and custom lighting)



89006- B & P Lamp Supply, Inc. -

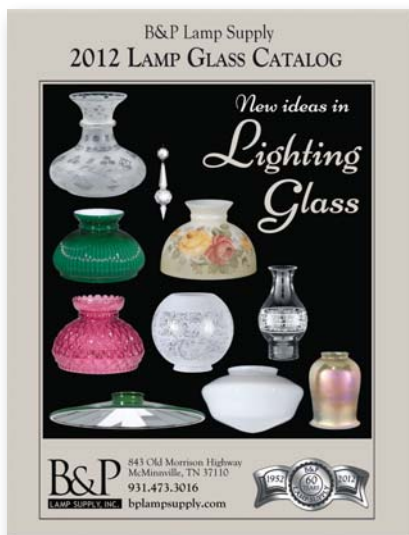
2013 Fabric Shades Supplement

This catalog supplement contains over 100 new styles and fabrics. Inside you will find an outstanding selection in new chandelier shades, table & floor shades, including new pleats, and amazing new mica lampshades. Shades are in stock and ready to ship. 24 pages

89004- B & P Lamp Supply, Inc. -

2011 Fabric Shades Catalog

The newest designs in dozens of fabrics. Inside you will find an outstanding selection in chandelier shades, table lampshades, floor shades, bridge, and mica lampshades. Shades are in stock and ready to ship. 100 pages



89001- B & P Lamp Supply, Inc. -

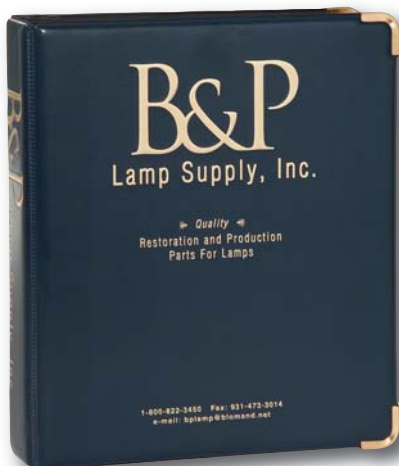
2012 Lamp Glass Catalog

An excellent source of supply for replacement glass for early style lighting. Includes a amazing selection of chimney glass, chandelier parts & crystals, Art Deco shades, student lampshades, gas/electric, torchiere, and fixture glass. 121 pages

89002- B & P Lamp Supply, Inc. -

Hardware Catalog

An excellent source of supply for custom manufacturers, antique dealers, lamp restorers, and general lamp repair. 228 pages



89005- B & P Lamp Supply, Inc. -

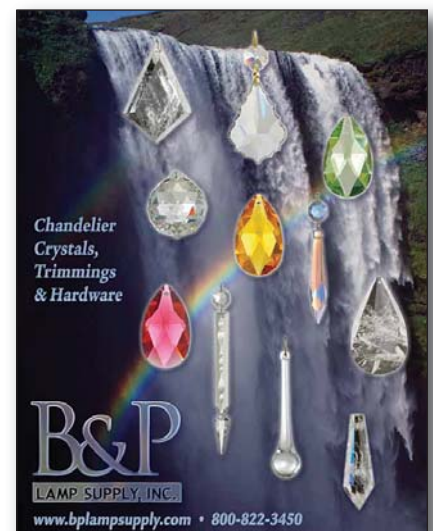
Five Catalog Set w/Sturdy 3-Ring Binder

All 5 current B & P Lamp Supply catalogs with handsome and sturdy 3-ring binder. A great way to organize all of B & P's publications, monthly specials, etc.

89003- B & P Lamp Supply, Inc. -

Chandelier Crystals, Trimmings and Hardware

Catalog features fine quality lamp crystals & chandelier parts. Includes an outstanding selection of candle covers. 52 pages



TAILOR~MADE LAMPSHADES™ Offers a Shade
Worthy of your Classic Lamp!

~ In-house Design and In-stock Delivery ~



Shade #07295F
Page S-6



Shade #07274B
Page S-5



Shade #07251B
Page S-10



Shade #05702S
Page S-17



Shade #07297A
Page S-6



Shade #07210V
Page S-8



Shade #07296A
Page S-6

